


THE MichiCANS

Identifying the areas where we can support youth and families address needs and build strengths.

 Center for Innovation
in Population Health





Start with a partnership to understand the youth and family's story

- It is the job of the behavioral health provider to integrate all the story tellers into a single story.
- It is essential that the child, youth and family are the centerpiece of this story from their perspective.
- The plan of care emanates from this story.
- The outcome of care is defined by this story.

The MichiCANS Supports Teaming

Teaming is an effective vehicle for collaboration on assessment, action planning and decision making. The MichiCANS can play a critical role in supporting these processes.



Summarizes the Assessment Process

The MichiCANS is intended to be the process by which the assessment information is organized, summarized, used and communicated once it has been collected.

Integrates the Family's Story

The MichiCANS provides a summary of the youth and family's story, and it should be done as an integration of multiple story tellers.

A Shared Vision for Coordinating Care

The consensus-based process of determining action levels on items and prioritizing relevant needs and strengths from which a coordinated plan is developed.

Supports Change Management

Mapping the information from the MichiCANS to the plan facilitates outcomes monitoring and management by all members of the team including the youth and family, allowing for plan adjustment, acknowledgement of accomplishments, and celebrating goals that have been met.

Why Change to the MichiCANS?

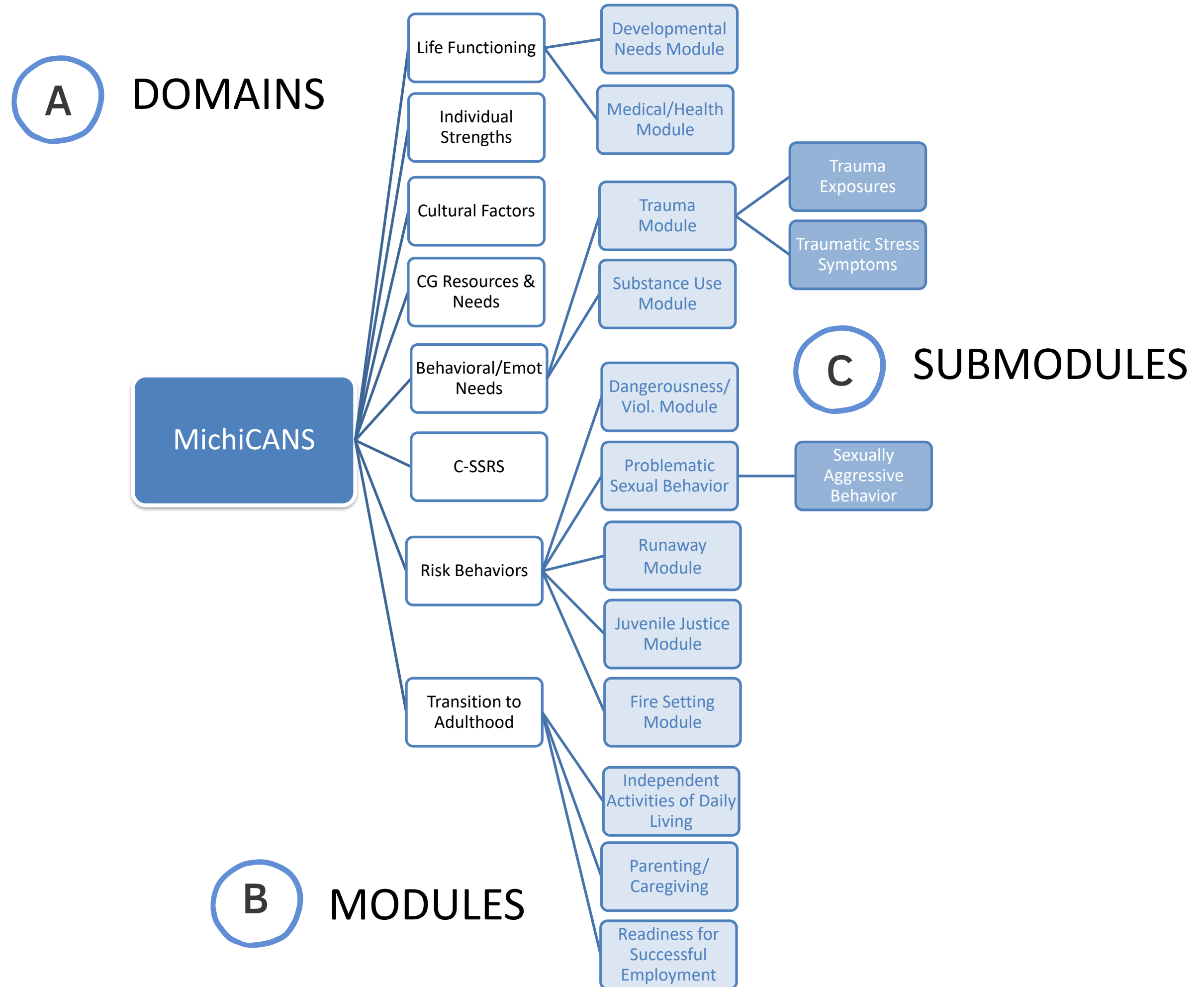
- Includes youth with Serious Emotional Disturbance and Intellectual/ Developmental Disabilities
- Can be used up to age 21
- Supports cross system understanding and collaboration
- Elevates strengths and needs for planning
- May help with early identification of needs for youth and families and support crisis prevention

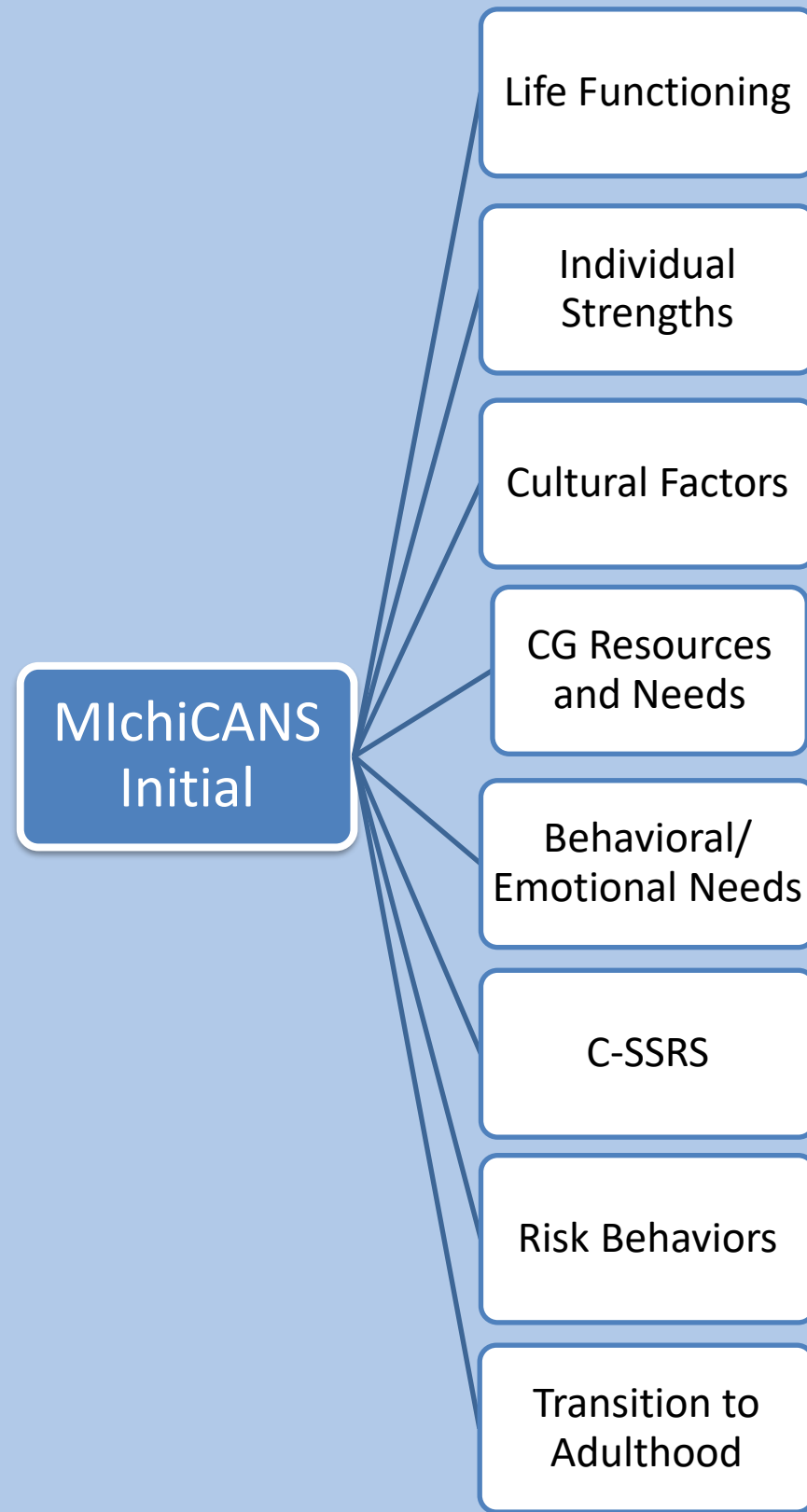
Current Assessment Tools

- Child and Adolescent Functional Assessment Scale (CAFAS)
 - Phase out use of this tool over the next two to three years.
- Preschool and Early Childhood Functional Assessment Scale (PECFAS)
 - Phase out use of this tool over the next two to three years.
- Devereux Early Childhood Assessment (DECA)
 - Continue use of this tool up to age 6

STRUCTURE

MichiCANS Ages 6-21

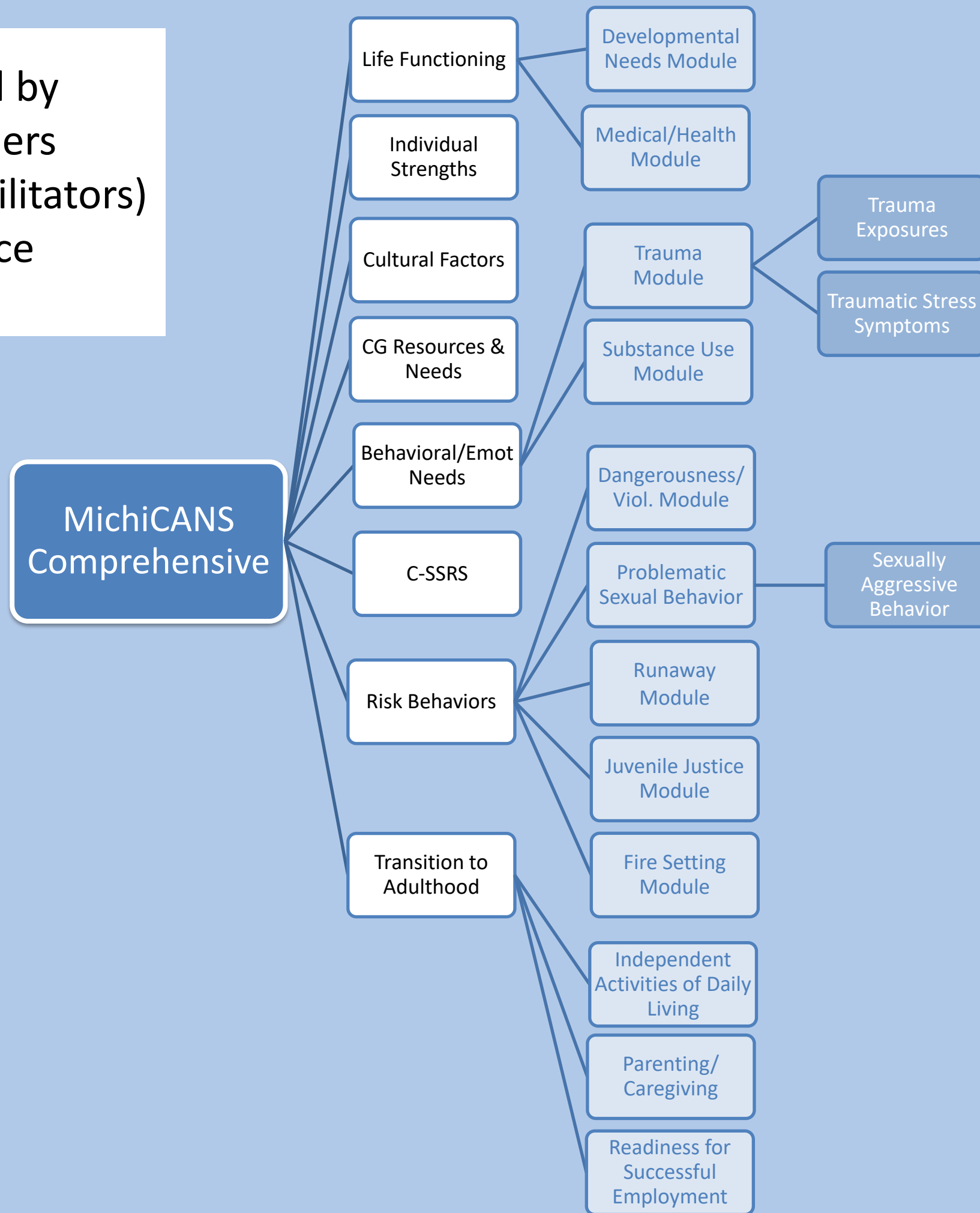




The MichiCANS Initial will be used at CMHSP Access/Intake Centers as a standard way to guide initial assessment and eligibility determination that guides the level of services that children and families will receive, including external behavioral health referrals.

In the future, the MichiCANS Initial will be used by Mobile Intensive Crisis Stabilization Teams to promote access to CMHSP and identify immediate needs.

The MichiCANS Comprehensive will be used by clinical and care coordination service providers (therapists, case managers, wraparound facilitators) to guide initial and ongoing treatment service planning.



MichiCANS IT Implementation Plan



**Community Mental Health
(CMH) organizations (43/46)**

**Embedded directly into PCE
electronic health record**



Additional three CMHs

**API embedded into the EHR of
choice (NetSmart or Streamline)**



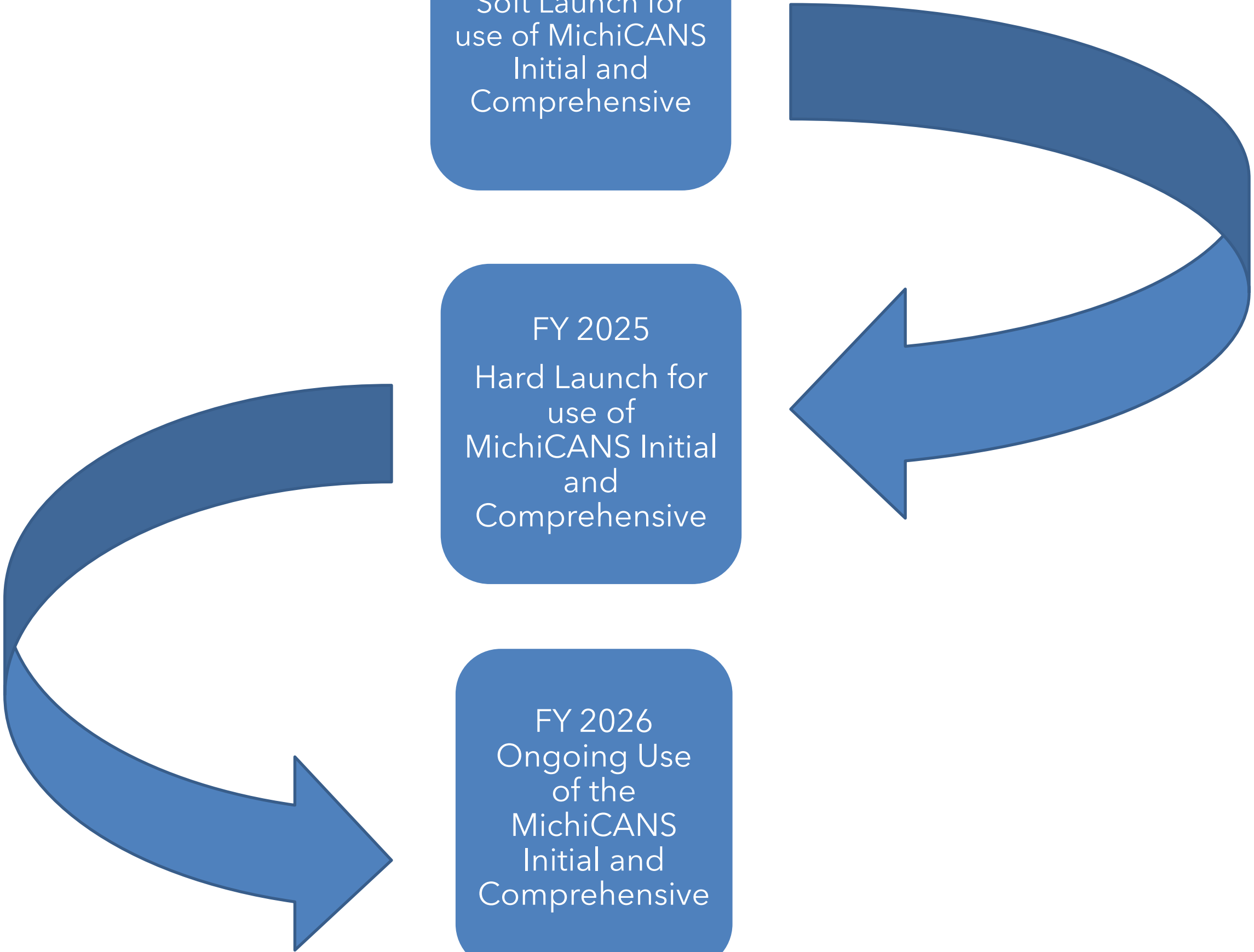
**Additional medical staff
which may include those
within other child serving
systems.**

**Access directly through
CareConnect360**

FY 2024
Soft Launch for
use of MichiCANS
Initial and
Comprehensive

FY 2025
Hard Launch for
use of
MichiCANS Initial
and
Comprehensive

FY 2026
Ongoing Use
of the
MichiCANS
Initial and
Comprehensive



The Praed Foundation



- <https://praedfoundation.org/>



Questions/ Feedback

Kim Batsche-McKenzie LMSW

Division Director

Division of Program and Grant Development and Quality Monitoring

Bureau of Children's Coordinated Health Policy and Supports

Michigan Department of Health and Human Services

333 S. Grand Ave.

Lansing, MI 48933

Email: Batsche-McKenzieK@michigan.gov

Lisa Collins MA-CCC SLP, Ed. S.

Section Manager

Access, Workforce Development, and Education Section

Bureau of Children's Coordinated Health Policy and Supports

Michigan Department of Health and Human Services

333 S. Grand Ave.

Lansing, MI 48933

Email: Collinsl10@michigan.gov

Erin Mobley , MA

Section Manager

Data Monitoring and Quality Improvement

Bureau of Children's Coordinated Health Policy and Supports

Michigan Department of Health and Human Services

333 S. Grand Ave.

Lansing, MI 48933

Email: MobleyE2@michigan.gov